

---

# What's New

---

2011 M6

---

31.10.11

---

**Contents**

Trading Pro..... 4

- HB#58080 Commission for All Users ..... 4
- HB#60285 Order Ticket – Quick Search Client Functionality..... 4
- HB#61826 Thin Market Window..... 4

Risk..... 4

- HB#51559 New Column in Risk – Text Input Field..... 4
- HB#61108 Risk Report – Per Client & Client Area..... 4

Gateways..... 5

- HB#49907 Order Gateway Refactoring & Optimization ..... 5
- HB#59959 Ability to Cancel GTC/GTD After Exchange Closed..... 5
- HB#60390 Upgrade to OMX API – Genium Inet ..... 5
- BT20089   Eurex – Upgrade..... 5
- BT20162   SGX – Upgrade 218 ..... 5

SEALS..... 5

- HB#19206 Authorization/Approval ..... 5
- HB#57193 Support Leading Spaces on References ..... 9
- HB#59616 Change Default Workspace Columns ..... 10
- HB#62262 Include Send Status Feature Similar to Trading ..... 10
- HB#62685 Changes to Bespoke Matching Criteria ..... 12
- HB#64029 User Restrictions ..... 12
- BT19762   Don't show 'Force Note' dialog if there are no reasons defined ..... 12

Clearing Back-End ..... 12

- HB#39147 FIX Based Clearing API – Allocations ..... 12
- HB#47320 Archiving/Reporting Database ..... 12
- HB#52994 Clearing FIX –Clearing Days ..... 12
- HB#59458 SEALS to R&N Export..... 12
- HB#59614 Replication of SEALS-APAC Reports ..... 13
- HB#59615 Allow Manual Match of Multiple Order Lines..... 13
- HB#61290 LTOM Open Close Needs to Handle Splits and Give-ins..... 13
- HB#61582 Membership for NYPC..... 13
- HB#63537 Change to Original Account Data ..... 13

HB#64876 Support Busts on CME.....	13
BT15109 History Column Wrapping.....	13
BT19675 Update Exchange Member Properties to Remove Obsolete Settings.....	13
System Infrastructure .....	14
HB#53336 Slight Change to IES Configs – Group same Price Fills.....	14
HB#57521 Logging of Actions Completed.....	14
HB#60810 Ability to Copy Margin Sets in GBDS Manager.....	14
BT16722 Simple Emergency Release Support .....	14
BT19663 Allow Start/Stop/Restart of Config Agent in Multi-Selection .....	14
BT19710 Exchange Status Column Name Change Utility.....	14
BT19713 System Monitor Creates Alerts if Data Cannot Be Persisted .....	15
BT19802 Security Group Context Menu Improvement .....	15
BT19903 FTP Downloader Utility .....	15
BT19951 Clearing Service Node Functions.....	15
BT20110 & BT20113 New Option Pricing Model .....	15
BT20125 Custom Tags on Exchange Account .....	15

# What's new in 2011 M6

---

## Trading Pro

### **HB#58080 Commission for All Users**

Several types of commission can be applied in the NG system. One is the commission for LME averaging traders. LME specific commission can also be applied to traders who are not averaging users.

An "LME Averaging" security setting has been migrated to an ordinary security setting (see also HB#38297). The setting has been split to averaging, value date change, enable average status (previously disabled value data change) and LME commission.

### **HB#60285 Order Ticket – Quick Search Client Functionality**

Users can now tab around controls of Order Ticket in Trading Pro. (Click at the key Tab on the keyboard switches from the selected control to the next one in predefined order.)

Previously, when the tabbing reached the client selector the cursor appeared at the left most position. The previous selected client remained as it was and the user needed to delete it and type the new client name or use the drop-down selector.

Now, the default client is highlighted when tabbing reaches the client control. The user can directly start typing a new client name so that the client can be reselected quickly and without any mouse usage.

### **HB#61826 Thin Market Window**

The toolbar in the market data view can now be hidden by a pin control, similar to the pin function of the order view. It reappears when the pin is taken off.

## Risk

### **HB#51559 New Column in Risk – Text Input Field**

A new field has been added at the client/trader level of risk management data. It is a free text field and it will serve as a comment at the client/trader level.

This is available in all the grid views of Risk Manager wherever the client/trader overall data are displayed. Standalone windows, for example client details or orderbook, do not display the field.

### **HB#61108 Risk Report – Per Client & Client Area**

New two risk exports have been implemented. They are very simple and export only long/short position limits and max clip size. One of them exports these limits per client/product the second one per client area/product. These exports are valid for futures, options and TAPO on LME.

## Gateways

### HB#49907 Order Gateway Refactoring & Optimization

Our order gateways have now been optimized. No new functionality has been added, however, the optimization brings in easier code maintenance and better performance.

### HB#59959 Ability to Cancel GTC/GTD After Exchange Closed

Traders can now pull GTC/GTD orders after the exchange closed. Synthetic GTC/GTDs are day orders on the exchange, and are pulled there automatically after the exchange is closed. Therefore, the synthetic GTC/GTDs are can be pulled as they are.

Native GTC/GTD cannot be pulled on the gateway side. They must be pulled also on the exchange side. When the exchange is closed the trader must call the exchange and request manual assistance.

### HB#60390 Upgrade to OMX API – Genium Inet

Genium Inet commodities upgrade has been implemented to Nasdaq OMX API.

### BT20089 Eurex – Upgrade

Eurex has been upgraded to the version 14.

### BT20162 SGX – Upgrade 218

SGX API connector has been upgraded to the version 218.

## SEALS

Flexible instruction rules are now available.

### HB#19206 Authorization/Approval

The ability for the user to approve or disapprove instructions on trades has been added to SEALS.

#### *Approval Required and Approved Trades*

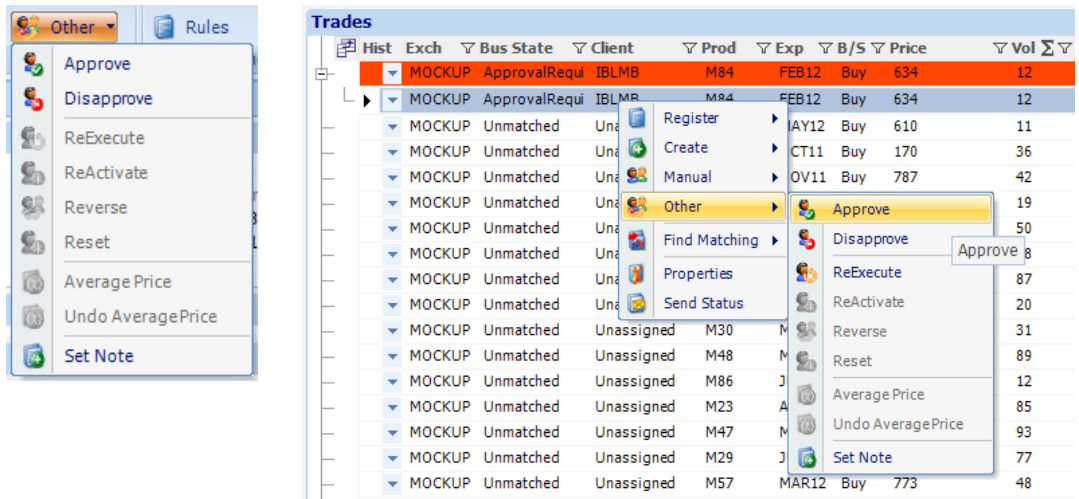
New business states “ApprovalRequired” and “Approved” have been added for trades and orders. An order will be in one of these states if any of its matching trade(s) are also in this state.

Note that trades and orders in these states will be returned by searches for “All”, “ApprovalRequired”, or “Approved” business states.

Trades													
	Hist	Exch	Bus State	Client	Prod	Exp	B/S	Price	Vol	Op	Strike	Pos Acc	Exch Ref 1
		MOCKUP	ApprovalRequi	IBLMB	M84	FEB12	Buy	634	12	Put	118917450.9	Pos1	Ref1
		MOCKUP	ApprovalRequi	IBLMB	M84	FEB12	Buy	634	12	Put	118917450.9	Pos1	Ref1
		MOCKUP	Unmatched	Unassigned	M90	MAY12	Buy	610	11	Put	257826896.8	Pos1	Ref1

#### *Approve and Disapprove Actions*

New menu items have been added to allow the user to Approve or Disapprove the instructions on the selected trade(s) or the matching trade(s) of the selected orders(s).



These actions can force the user to set a note on the trades by setting the new "ApprovalForceNote" option on the "Require note for force and split" Clearing Configuration item for the appropriate exchange member using System Manager.

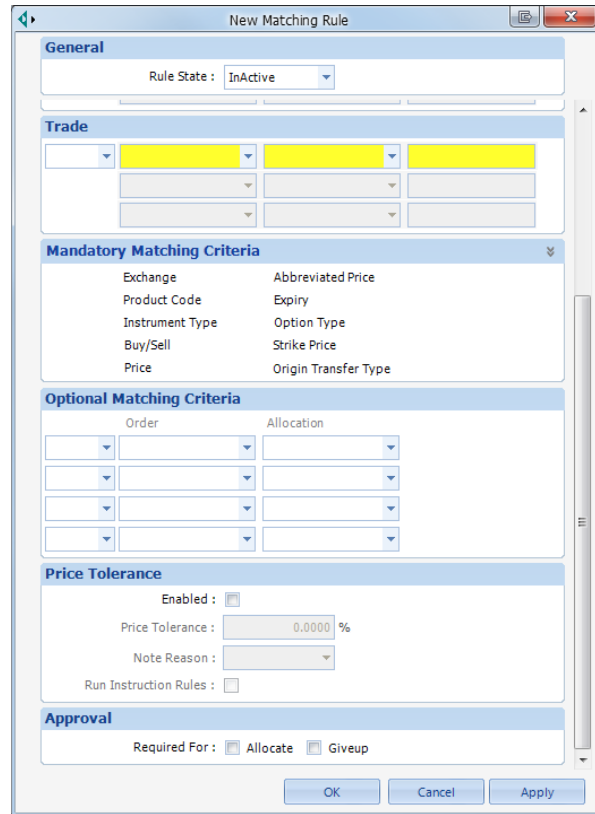
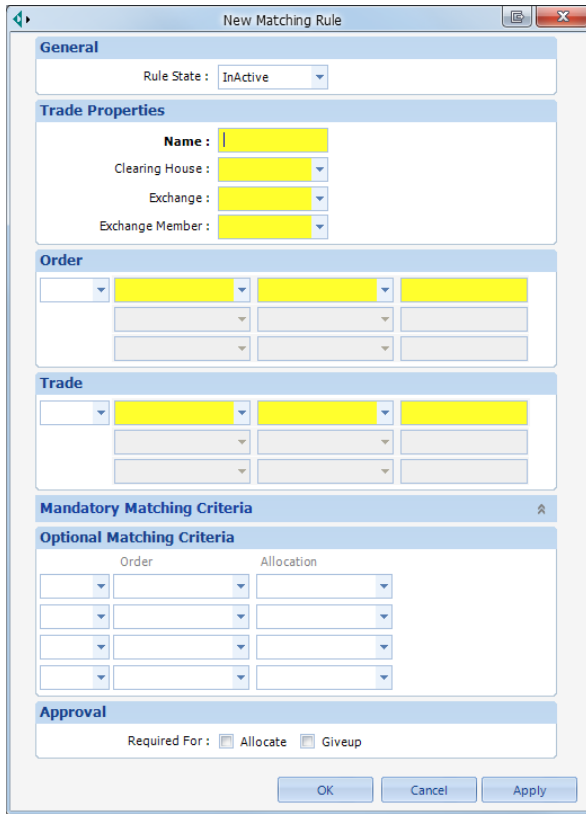
## Acceptance, Mapping, and Matching Rules

The user can specify whether the action requires approval when they create or edit an Acceptance, Mapping, or Matching rule.

Approval can be required when the rule results in the trade being allocated and/or given up.

The 'New Acceptance Rule' dialog box is divided into four main sections: General, Properties of Trade, Rule Conditions, and Mapping. The 'General' section has a 'Rule State' dropdown set to 'InActive'. The 'Properties of Trade' section includes 'Clearing House', 'Exchange', and 'Exchange Member' dropdowns. The 'Rule Conditions' section contains a table with five rows of dropdown menus. The 'Mapping' section has 'Mapping Option' set to 'Select Client' and a 'Select Client' dropdown. The 'Approval' section has 'Required For' with checkboxes for 'Allocate' and 'Giveup'. At the bottom are 'OK', 'Cancel', and 'Apply' buttons.

The 'New Mapping Rule' dialog box is identical in layout to the 'New Acceptance Rule' dialog box. It features the same sections: General (Rule State: InActive), Properties of Trade (Clearing House, Exchange, Exchange Member), Rule Conditions (table of dropdowns), Mapping (Mapping Option: Select Client, Select Client dropdown), and Approval (Required For: Allocate, Giveup). The 'OK', 'Cancel', and 'Apply' buttons are located at the bottom.



Note that the Matching Rule dialog has been slightly redesigned to cater for the addition of the Approval fields, with the Mandatory Matching Criteria labels and Price Tolerance fields moved from the Optional Matching Criteria panel into their own panels.

Explorer	
- All	
Unallocated	15996
Action Req'd	0
- CCX	
Unallocated	-
Action Req'd	-
- CFE	
Unallocated	1000
Action Req'd	0
- CME	
Unallocated	-
Action Req'd	-
- COMEX	
Unallocated	1000
Action Req'd	0
- DME	
Unallocated	1000
Action Req'd	0
- EDX	
Unallocated	-
Action Req'd	-
- EEX	
Unallocated	-
Action Req'd	-
- ENX-AMSTERDA...	
Unallocated	-
Action Req'd	-
- ENX-BRUSSELS...	
Unallocated	-
Action Req'd	-
- FNX-ITSRON	

### Action Required Counters

The existing Errors counters on the Explorer, Clearing Filter Summary and Trade Status panels have been replaced with a new Action Required counter.

This counter includes trades in Error and ApprovalRequired business states.

### Trade Status

Note that the Action Required counters in this panel, when clicked by the user, will search on both trades and orders requiring action.

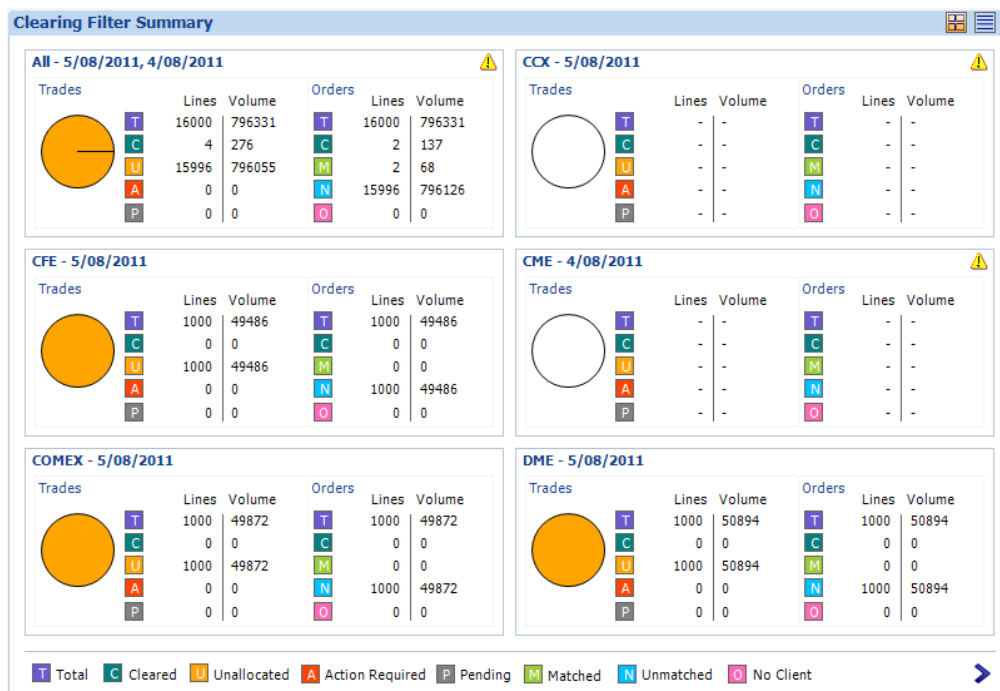
Trade Status			
	Executions	GiveIns	GiveUps
	Lines	Lines	Lines
Unallocated	996	0	0
Action Req'd	0	0	0
Rejected	0	0	0

## Clearing Filter Summary

Due to the replacement of the Trades Error counter with the Trades Action Required counter, any changes to the grid view's Trades Error counter column that were saved in the user's workspace will be lost (e.g. if the user had moved/hidden the column).

Additionally, an Orders Action Required counter column has been added to the grid view, located after the Orders No Client counter column.

Clearing Filter Summary			Trades Total	Trades Cleared	Trades Unallocated	Trades Action Req'd	Trades Pending	Orders
Filter	Clearing Day	Lines	Volume	Lines	Volume	Lines	Volume	Lines
All	5/08/2011,...	16000	796331	4	276	15996	796055	0
CCX	5/08/2011	-	-	-	-	-	-	-
CFE	5/08/2011	1000	49486	0	0	1000	49486	0
CME	4/08/2011	-	-	-	-	-	-	-
COMEX	5/08/2011	1000	49872	0	0	1000	49872	0
DME	5/08/2011	1000	50894	0	0	1000	50894	0
EDX	5/08/2011	-	-	-	-	-	-	-
EEX	5/08/2011	-	-	-	-	-	-	-
ENX-AMSTERDAM-E...	5/08/2011	-	-	-	-	-	-	-
ENX-BRUSSELS-EQ...	5/08/2011	-	-	-	-	-	-	-
ENX-LISBON	5/08/2011	-	-	-	-	-	-	-
ENX-PARIS	5/08/2011	-	-	-	-	-	-	-
ENX-PARIS-EQUITY	5/08/2011	-	-	-	-	-	-	-
EUREX	5/08/2011	-	-	-	-	-	-	-



## HB#57193 Support Leading Spaces on References

SEALS now supports leading spaces on the following reference fields: Exchange Ref 1, 2, 3; Giveup Ref 1, 2, 3; BO Account; BO Reference; Client Ref 1, 2, 3; and Broker Ref.

Note that this applies to the Allocate, Giveup, and Registration manual action forms, as well as the Rules and CCM.

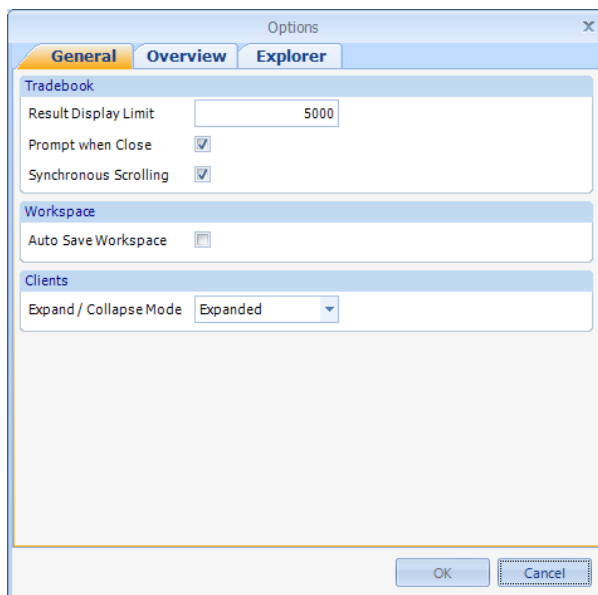
## HB#59616 Change Default Workspace Columns

The ordering of the Orders and Trades grid columns has been changed in the default workspace so that both grids have their common columns in similar positions.

As part of this change, the columns sorted by default have been modified to be the ID columns for both grids (i.e. Order ID and Trade ID).

Note that existing workspaces will not be affected by this change, only when a default workspace has been loaded will the changes appear.

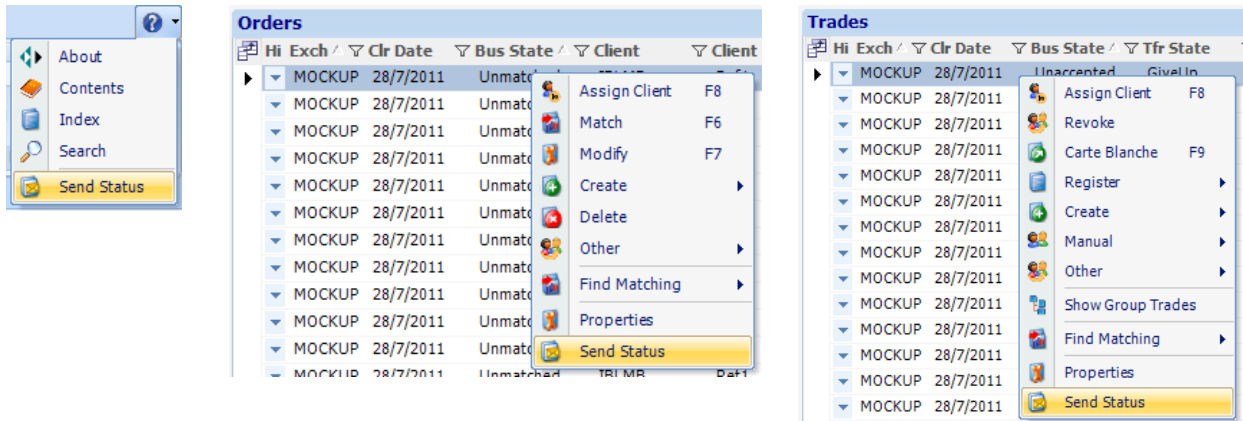
The ability to synchronise the horizontal scroll between the Orders and Trades grid has also been added, and will be turned on by default. The user can turn off/on this setting via the Options dialog, which will be saved in their workspace.



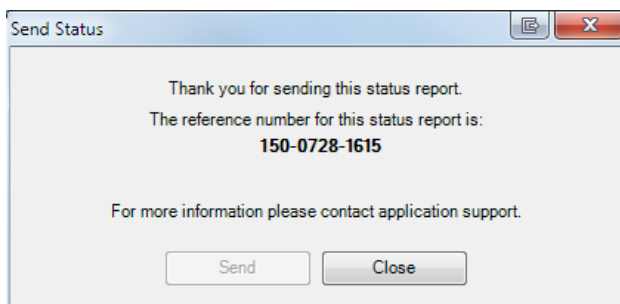
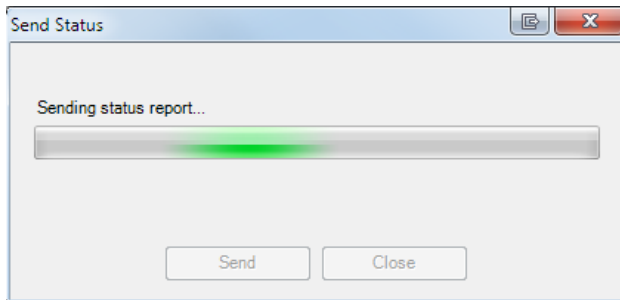
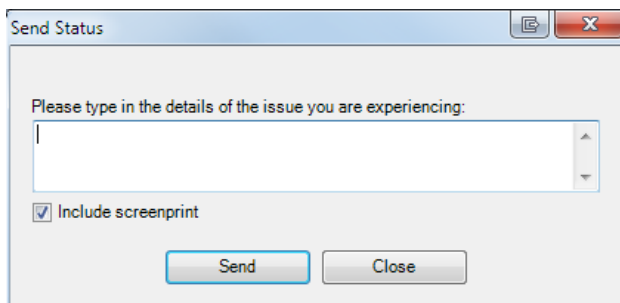
## HB#62262 Include Send Status Feature Similar to Trading

The ability for the user to report the current application status to support has been added to SEALS, based on the Trading implementation.

A new menu item has been added to the ribbon's Help menu as well as in the context menu for the selected trades/orders.



The “Send Status” dialog will be displayed when the user clicks the menu item, prompting the user to describe their issue and choose whether to include a screenshot or not.



Note that if the user is currently on a tradebook and has orders and/or trades selected, the details of these will also be included in the status report.

## **HB#62685 Changes to Bespoke Matching Criteria**

Manual matching within SEALS is now able to take into account additional criteria, configurable via the new “Additional manual matching criteria” Clearing Configuration item for the appropriate exchange member in System Manager.

An example of this configuration is: ExchRef1=ClientRef1;ExchRef2=ClientRef2 (see the HB for details on the available fields).

The Manual Match dialog in SEALS has also been enhanced to allow the display of all potential additional fields in the grid.

## **HB#64029 User Restrictions**

Individual menu items for Trades and Orders in SEALS are now able to be restricted for certain companies or users. By default, all menu items are allowed and this can be restricted for a user or company by updating the “User Rights – Orders” and/or “User Rights – Trades” clearing setting in System Manager.

## **BT19762 Don't show 'Force Note' dialog if there are no reasons defined**

The “Force Note” functionality has been modified so that if the manual action has been set to force notes but no reasons have been configured in GBDS, a note will not be forced and a warning logged to indicate that the action has been allowed without forcing a note.

## **Clearing Back-End**

### **HB#39147 FIX Based Clearing API – Allocations**

Allocations are supported in FIX based clearing API now.

### **HB#47320 Archiving/Reporting Database**

According to legislation the customer required that clearing data need to be stored for 7 years. Hence, a database archiving has been implemented.

Two modes of archiving have been implemented:

- Online database can be exported ones per 7-30 days.
- Historical data can be exported ones per 3-12 months.

### **HB#52994 Clearing FIX –Clearing Days**

Concept of FIX clearing days has been introduced. Clearers login to certain clearing day and must logoff in next 24 hours.

### **HB#59458 SEALS to R&N Export**

Export from SEALS to Rolf&Nolan has been implemented.

## HB#59614 Replication of SEALS-APAC Reports

Reports as supported in SEALS-APAC have been implemented in SEALS NG.

## HB#59615 Allow Manual Match of Multiple Order Lines

Manual match can be applied to multiple lines in the same time now.

## HB#61290 LTOM Open Close Needs to Handle Splits and Give-ins

Open/Close is handled for splits and give-ins on LTOM now.

## HB#61582 Membership for NYPC

Clearing connection has been established a member.

## HB#63537 Change to Original Account Data

The GiveupRef1 value is stored for give-ins. GiveupRef1 value is used instead of ExchangeRef. It results in OriginalAccount value being blank for all give-ins.

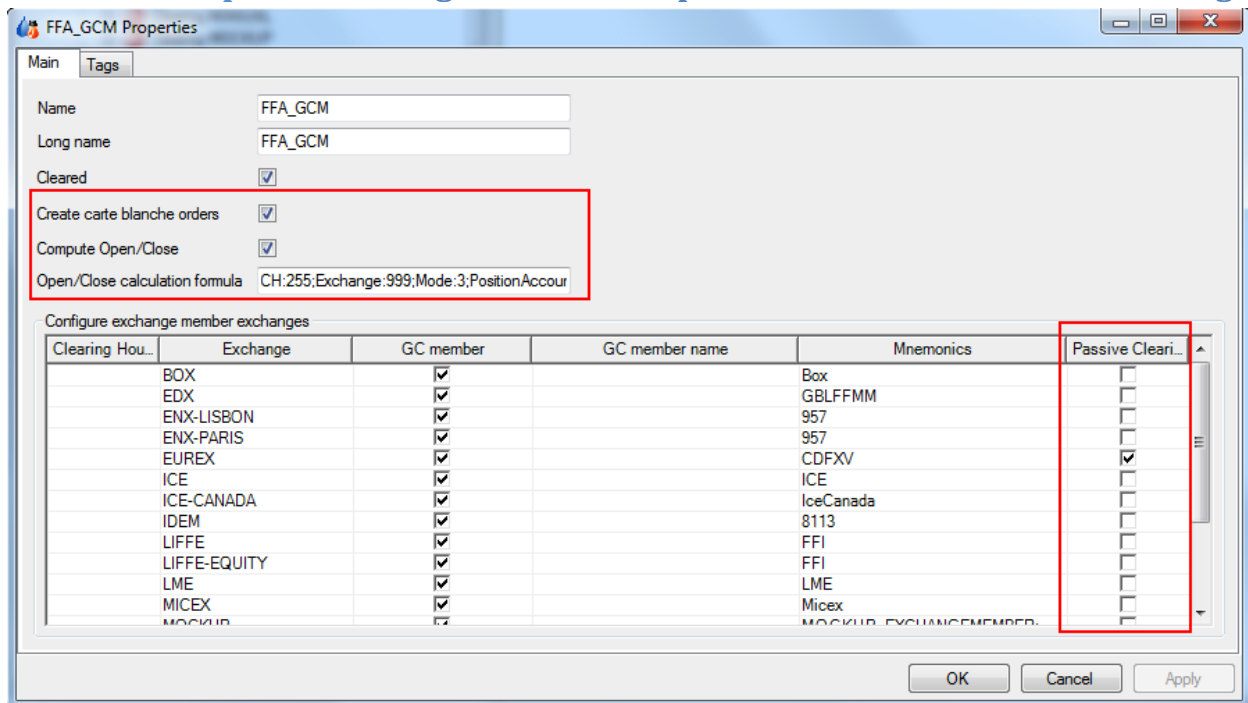
## HB#64876 Support Busts on CME

Busted trades on CME have been previously displayed as unmatched. They are no more displayed as trades that are to be processed.

## BT15109 History Column Wrapping

Long texts were not handled consistently in the column History in orders, trades and rules grids. Newly, the proper text wrapping has been implemented.

## BT19675 Update Exchange Member Properties to Remove Obsolete Settings



## System Infrastructure

### HB#53336 Slight Change to IES Configs – Group same Price Fills

A new export with trades grouped by price is available. Trades for the same client on the same market group by same price. For example, instead of 2 trades, each 10@1000.00, only one 20@1000.00 is exported.

### HB#57521 Logging of Actions Completed

Some activities in System Manager are now logged. It concerns mainly:

Creating a new user

Assigning roles to a user in System Manager

Assigning / removing gateways from a user (what gateways have been removed / assigned)

Assigning / removing clients assignment (what clients have been removed / assigned)

Assigning / removing users assignment (what users have been removed / assigned)

Assigning / removing brokers assignment (what brokers have been removed / assigned)

Assigning / removing security groups assignment (what security groups have been removed / assigned)

Editing of security group settings– what was changed, from and to information

Editing of user group properties – changed from and to (gateways assigned, Own, Last, Never behavior etc)

Creating a new client account

Assignment / removal of exchange accounts to client accounts (what has been assigned / removed)

Creating a new exchange account

Editing exchange accounts – any value change should be logged as to what it was before the change, and what it was changed to.

### HB#60810 Ability to Copy Margin Sets in GBDS Manager

Band sets can now be copied in Margin Manager. It helps to create a new band set easily as a small modification of an existing one. Previously, a new band set was created by typing-in every value from scratch.

### BT16722 Simple Emergency Release Support

Simple emergency release can be easily installed now. The release components are ZIPPED and must be put on the station where the main System Monitor is located. The deployment is started from System Manager. The system distributes necessary components to all stations as registered in System Monitor.

### BT19663 Allow Start/Stop/Restart of Config Agent in Multi-Selection

Multiple Config Agents can be started/stopped/restarted with one common multi-selection. Previously, Config Agents could be manipulated only one-by-one.

### BT19710 Exchange Status Column Name Change Utility

Exchange details grid view in System Manager has changed the column “Exchange Connection Status” to “Connection”.

### **BT19713 System Monitor Creates Alerts if Data Cannot Be Persisted**

If data cannot be persisted in a database, alerts are created and sent via system to the corresponding application. Previously this type of error was only logged but the user did not know what happened.

### **BT19802 Security Group Context Menu Improvement**

Context menu at the security group tree selection node, in System Manager, has been extended with new items "Add/Remove Members" and "Manage Rights". All together, the local menu items are:

- Add/Remove Members
- Manage Rights
- Rename
- Audit Trail
- -----
- Copy
- Delete
- -----
- Copy all to clipboard

### **BT19903 FTP Downloader Utility**

New FTP downloader is available for balances, positions and FX rates. File names can contain date as a suffix so that the download script can apply only to the latest files.

### **BT19951 Clearing Service Node Functions**

The local menu at the clearing service tree node in System Manager has been extended with items "Start All" and "Stop All". Similar items have been previously available for trading gateways.

### **BT20110 & BT20113 New Option Pricing Model**

Option prices are newly extended with on-line greeks calculation. Pricing depends on several input parameters and also on a choice of proper pricing model. The model will be based on an option type.

### **BT20125 Custom Tags on Exchange Account**

Custom tags can be defined on exchange account nodes in System Manager now. Previously, only pre-defined key-value pairs could be defined a value.